



Speed Skate Moving System

Multi-Purpose Moving Solutions

The Gondola Train Speed Skate System is the most versatile solution to moving most retail and office fixtures. The skates are lightweight and durable with a low profile design that allows the speed skate to slide easily under heavy furniture and fixtures. The heavy duty ball transfers provide ease of mobility on concrete, tile flooring, and commercial carpet.



We can provide customized rental or purchase options to fit your specific project needs.

MOVING SYSTEM BENEFITS

- Heavy duty ball transfers for greater weight distribution
- 12 Ton press fitted ball transfers
- Compact design for ease of portability
- Low profile for minimum required lift

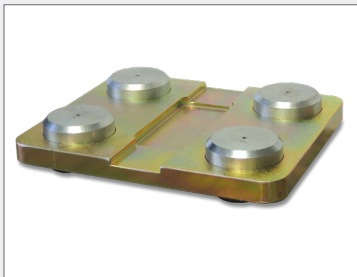
COMMON APPLICATIONS

- Gondola shelving/End Caps
- Point-of-Sale displays
- Check out counters
- Safes
- Refrigeration units
- Pallets
- Wood crates

Handle and Case Accessories Available



Models Available



Gold Streak

- Working load capacity of 2400 pounds
- Steel body
- Weight 6.62 pounds



Silver Streak

- Working load capacity of 2000 pounds
- Aluminum body
- Weight 4.14 pounds



Mighty Mouse

- Working load capacity of 1650 pounds
- Aluminum body
- Weight 2.73 pounds